

# bj·gear



## Gears and racks

Standard or customised solutions • High quality • Expertise and knowledge  
Short lead times • Wide range of materials • Special sizes possible

Customisation is our standard

## Gears and racks for all needs

BJ-Gear is in possession of the competence and capacity to manufacture all types of gear wheels, worms, worm wheels and racks. We are of course also at your disposal with consultancy on the design, dimensioning, choice of materials, hardening technology and surface treatment etc. to ensure your business the best possible overall result.

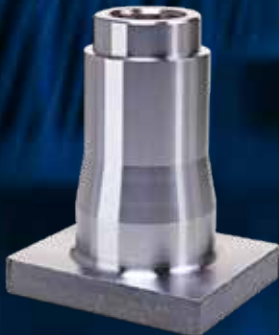


**Raw material**

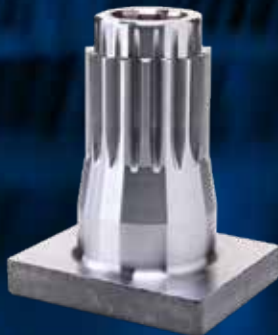


**Finished product**

Upon request, we manufacture complete products based on your drawings and specifications or complete products from semi-finished products.



**Semi manufactured**



**Finished product**

The flexible production machinery allows very short and precise delivery times, even when the products are customized.

The flexibility also means that we are able to produce in smaller numbers for your business.

## Technology

Highly qualified employees, the use of 3D CAD / CAM, advanced CNC machining centers, CNC measuring machines and modern robotic technology means that we can offer an efficient, quick and flexible production of a uniformly high quality.

### Turning and milling

Turning and milling are made on various CNC lathes, milling machines and machining centers. In addition, we have a large number of slotting and drilling machines, and equipment for broaching.

### Gear hobbing

Toothing of the products – external and internal – is mainly made on CNC gear machines.

### Hollow and cylindrical grinding

Our CNC grinding machines for hollow, cylindrical and surface grinding ensure that we can comply with specifications and measurements with great precision.

### Gear grinding

By using advanced grinding technology and flexible CNC machines, we carry out all types of gear profiles for instance crowning, tapering and tip relief.

### Gear measuring

We conduct quality inspections throughout the process and ending with a complete geometric gear measuring on our modern CNC measuring machine Klingenberg P40.

# Lean Enterprise - an overall philosophy



## Lean

Our Company is driven by means of Lean Enterprise as overall management philosophy. BJ-Gear has put continuous improvements of quality and customer service on top of the agenda.

The goal is to optimize the entire value chain from order to delivery and thus meeting customer demands and expectations even better.



# Gear Racks

## Gear rack products

- Standard gear racks
- Helical gear racks
- High precision gear racks
- Hexagon gear racks
- Round gear racks
- Rack and pinion

## Features and advantages

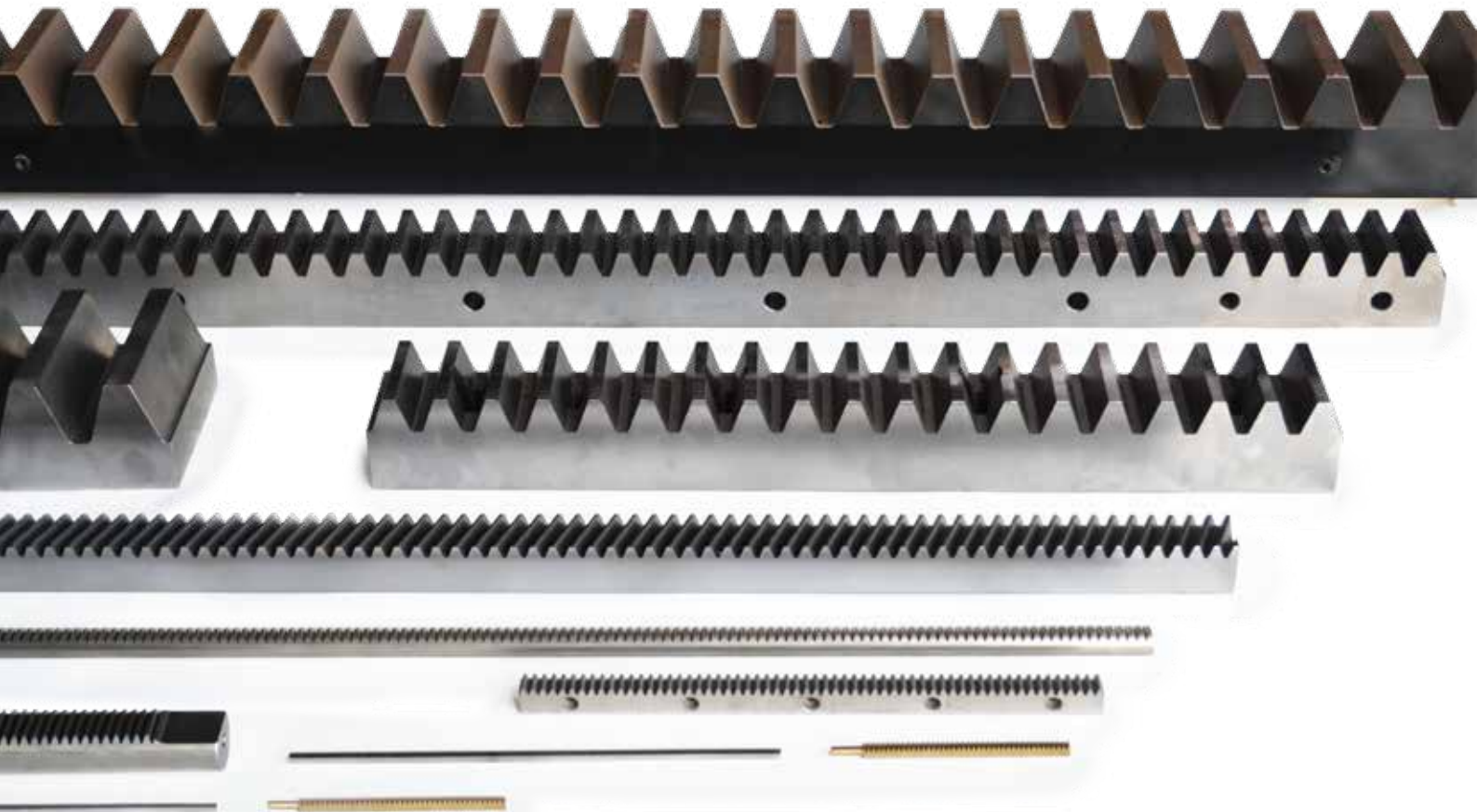
- Machined according to drawings
- Special sizes possible
- Innumerable possibilities for customized specifications like machined ends and bolt holes etc.
- Customized surface treatments
- Hardened and flange grinded designs

## Materials

- High grade steel as standard
- High grade stainless steel
- High grade bronze
- High grade brass
- All types of plastic
- Special alloys on request

## Data specifications

- Module: 0.5 - 25
- Ø5 - Ø200 mm
- Tooth width up to 240 mm
- Length up to 5 m



# Worms and worm wheels

## Features and advantages

- Machined according to drawings
- Customized measurements
- DIN 3974 class 5
- Customized surface treatments
- Hardened and flange grinded designs

## Materials

- High grade steel as standard
- High grade stainless steel
- High grade bronze
- High grade brass
- All types of plastic
- Special alloys on request

## Data specifications

- Module: 0.5 - 12
- Worm wheels: Ø10 - Ø700 mm
- Worms: Ø5 - Ø300 mm
- Worm length up to 1,250 mm



## Gear wheels

### Gear wheel products

- Spur gears
- Helical gears
- Bevel gears

### Features and advantages

- Machined according to drawings
- Special sizes possible
- Innumerable possibilities for customized specifications
- Customized surface treatments
- Hardened and flange grinded designs possible

### Materials

- High grade steel as standard
- High grade stainless steel
- High grade bronze
- High grade brass
- All types of plastic
- Special alloys on request

## Data specifications

- Module: 0.1 - 16
- Ø5 - Ø700 mm
- Length up to 1,250 mm



# Other products

## Materials

- High grade steel
- High grade stainless steel
- High grade bronze
- High grade brass
- All types of plastic
- Other materials on request

### Internal splines

Module: 0.5 - 8  
 Ø5 - Ø300 mm  
 DIN 5480/81/82  
 ANSI/BS/NF/SIS



### Timing belt pulleys

Ø10 - Ø700  
 Millimeters, inch, AT and  
 HDT type



### Spline shafts

Module: 0.5 - 8  
 Ø5 - Ø500  
 DIN 5461/62/63  
 ANSI/BS/NF/SIS  
 Length up to  
 1,250 mm



### Sprocket wheels

Ø5 - Ø700  
 All types



### Trapezoidal spindles

TR 10 - 140  
 DIN 103  
 ISO 2901/2902/  
 2903/ 2904  
 Length up to  
 6,000 mm



### Trapezoidal nuts

TR 10 - 140  
 DIN 103  
 ISO 2901/2902/2903/  
 2904



# bj·gear

Customisation is our standard



## BJ-Gear A/S

Niels Bohrs Vej 47  
DK-8660 Skanderborg, Denmark  
VAT No. DK 10166470

Phone +45 87 40 80 80  
Email [bj@bj-gear.com](mailto:bj@bj-gear.com)  
Website [www.bj-gear.com](http://www.bj-gear.com)

Copyright © 2022 BJ-Gear A/S. All product rights reserved. All data, illustrations, photos, drawings and statements are for general information only and subject to change without notice and should not be considered as a warranty or legal obligation of any kind.